

QE

QUINTAESFERA

ALFOMBRASIMÓQUETASISALESIVINILD



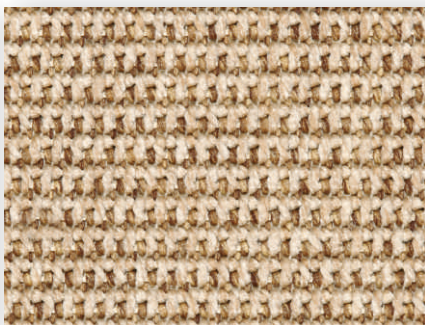
— NUH —

# NU

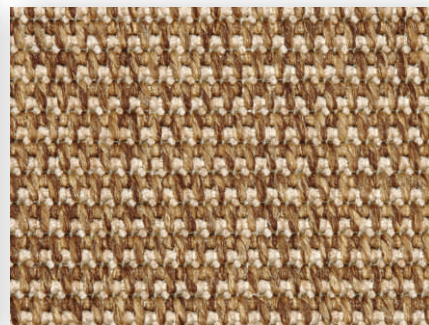
Colores disponibles - Colours available



162 pearl



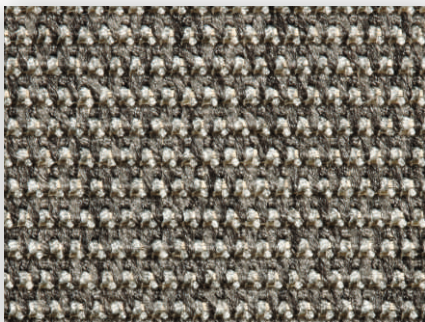
262 desert



752 wood



372 mist



882 basalt




392 pewter



962 gloom

## Detalles técnicos - Technical details

<b>Fabricación / Manufacturing method</b>	Tejido mecánico	<b>Altura total / Total height</b>	5 mm
<b>Composición / Pile content</b>	100% Polipropileno	<b>Resistencia a la luz / Light fastness</b>	5 - 6
<b>Soporte / Backing</b>	Resina	<b>Resistencia al agua / Water resistance</b>	4 - 5
<b>Ancho rollo / Width roll</b>	2 y 4 m	<b>Resistencia al agua salada / Saltwater resistance</b>	4
<b>Densidad / Tuft density</b>	70.400/m <sup>2</sup>	<b>Resistencia Térmica / Thermal resistance</b>	0,12 m <sup>2</sup> K/W
<b>Peso fibra / Pile Weight</b>	1.100 gr/m <sup>2</sup>	<b>Calificación al fuego / Flammability</b>	E <sub>n</sub> -s1
<b>Peso total / Total weight</b>	1.640 gr/m <sup>2</sup>	<b>Aislamiento acústico / Sound insulation</b>	22 dB
		<b>Disponibile como moqueta / Available as carpet</b>	
		<b>Disponibile como alfombra / Available as rug</b>	